

*Town of
Madison, Connecticut*

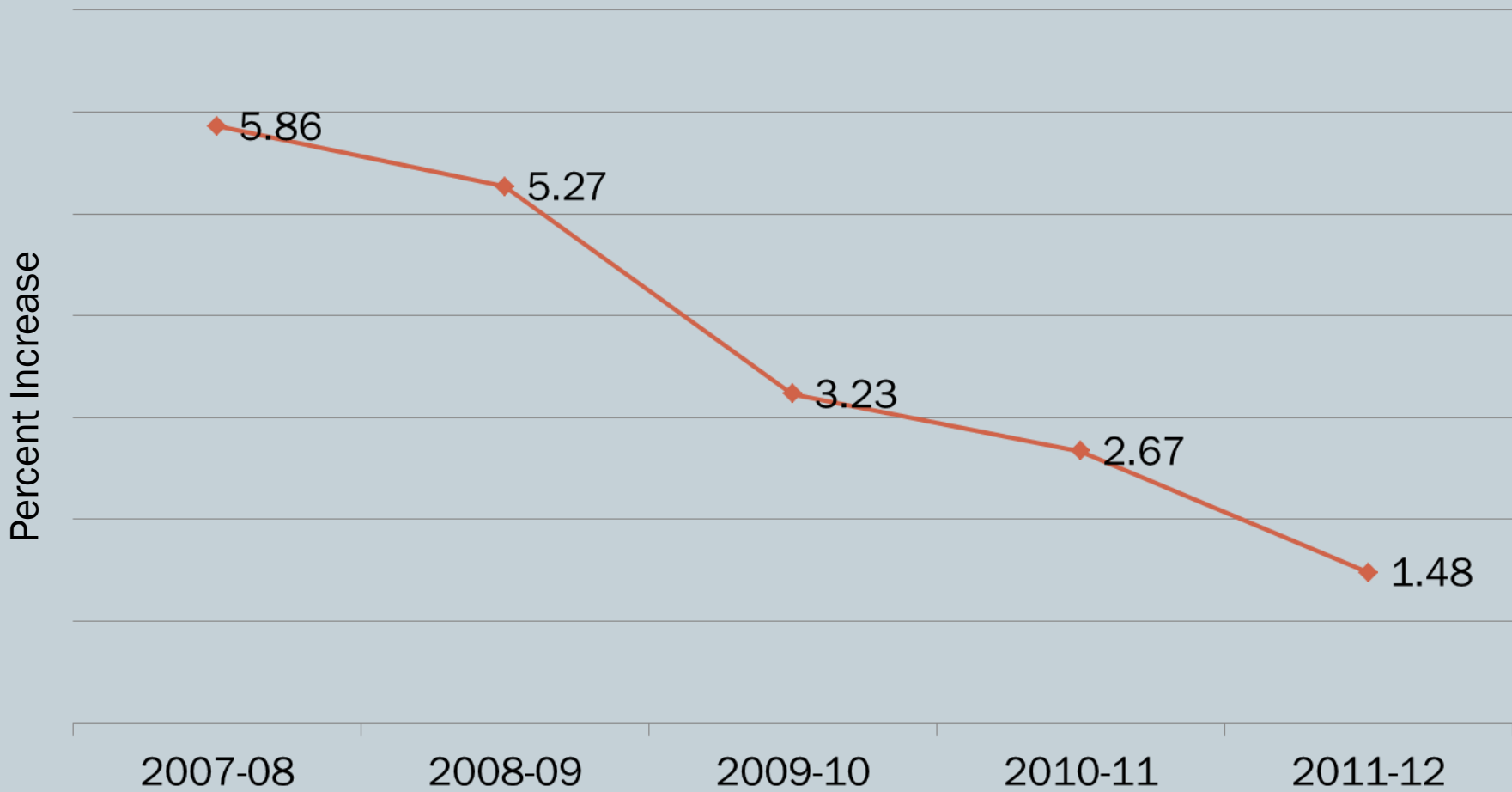


**BUDGET
PRESENTATION**



February 17, 2011

Total Town & BOE Percentage Increases



Town Budget Differences

2010-2011	\$19,878,581
Wages, General	296,052
Benefits - Pensions	59,112
Health	137,698
Other	77,785
Senior Center Opening	88,937
Maintenance	39,875
Ambulance Paramedic	40,000
Technology Reserve	45,000
Debt Service	55,985
Legal	(56,000)
Land Purchase / Nathan's Lane	(87,200)
All Other	(50,874)
2011-2012	\$20,524,951

Major Cost Containment Activities



Refinance High School Bonds	153,875
Prepay Pension Costs	48,000
Restructure Pension Actuarial Assumptions	35,600
Smooth Debt Service Increase from Fund Balance	300,000
Apply Open Space Reserve Funds to Griswold Debt Service	125,000
Reduce Most Reserve Fund Contributions by 10%	85,061
	\$747,536

Long Term Capital Maintenance (LOCAP)



Funding	Add to Reserve:	\$1,024,864
Projects	Brown School – Replace outdated and inefficient electric heat system with efficient dual-fuel HVAC; Phase 3	768,000
	Polson School - Replace three old boilers, asbestos abatement	500,000
	Brown School – Replace old, missing and damaged siding; improve heating efficiency and reduce water damage; Phase 3	265,000
	Town Campus, Gym, Arts Barn, Memorial Town Hall – Replace outdated fire alarm system	115,000
	Town Campus - Replace shingles	85,000
	Bauer Farmhouse – Replace roof and siding	85,000
	Pavement Maintenance & Replacement	95,000
	Planning & Engineering	50,000
		\$1,963,000

Snow Trivia #1



How many cubic feet of snow have we plowed so far this winter?

99,000,000

(Courtesy of Selectman Bill Gladstone)

Snow Trivia #2



How much has the town spent on snow plowing so far this year?

\$400,000

Total Town Budget



	Approved 2010-2011	Requested 2011-2012	Change	% Change
Operations & Private Schools	15,067,629	15,498,390	430,761	2.86%
Reserve Funds	3,241,956	3,401,580	159,624	4.92%
Debt Service	1,568,996	1,624,981	55,985	3.57%
Total Town	19,878,581	20,524,951	646,370	3.25%
Board of Education	50,336,165	50,729,364	393,199	0.78%
Grand Total	\$70,214,746	\$71,254,315	\$1,039,569	1.48%