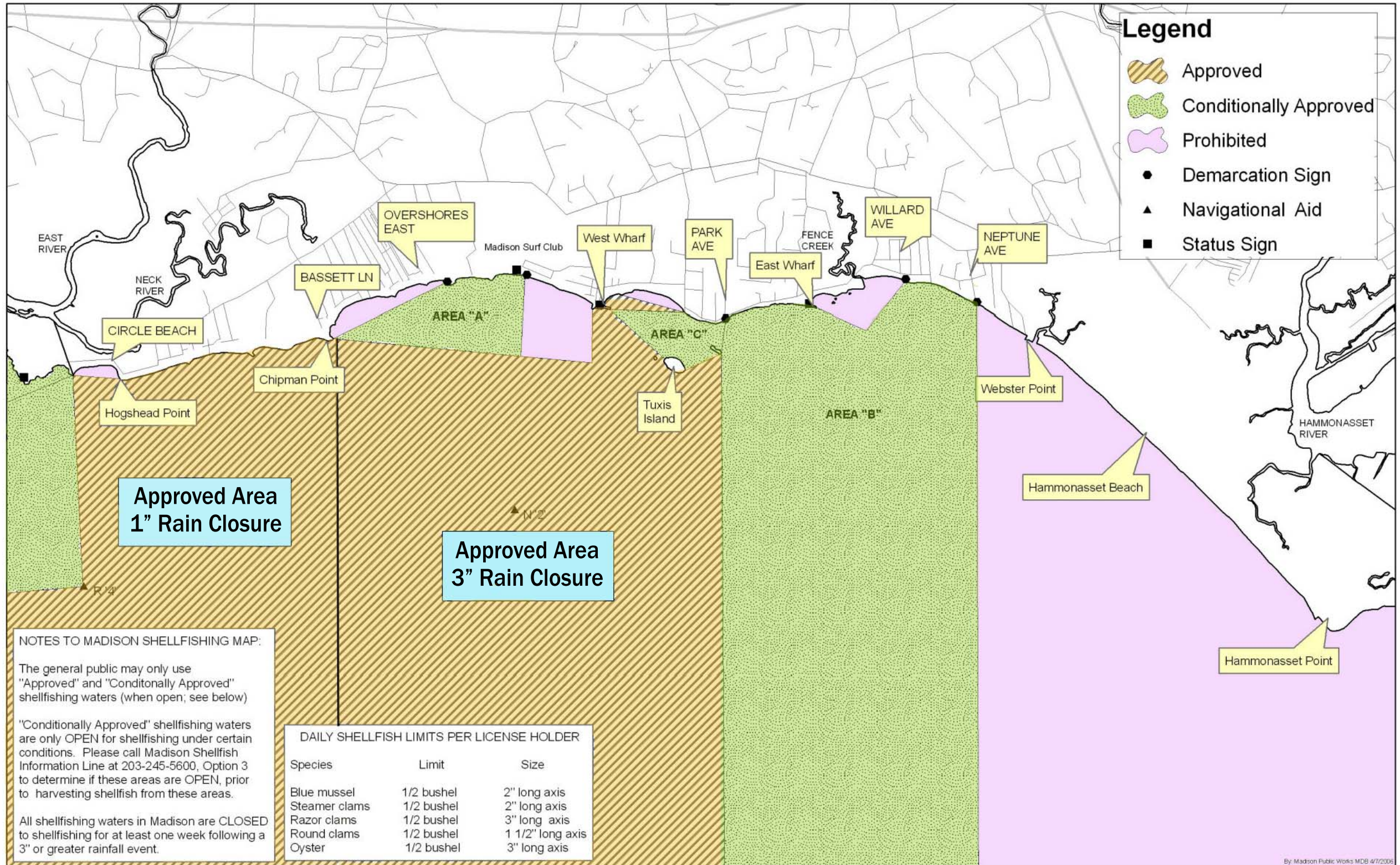


# Madison Recreational Shellfishing Map

\*\*THIS MAP NOT INTENDED TO BE USED FOR NAVIGATION.



# **Madison Shellfish Commission**

## **Recreational Shell Fishing Regulation**

### **Madison Shellfish Licenses**

- Must be obtained prior to shell fishing in Madison
- Must be carried on your person when shell fishing
- Required for each person 16 years of age
- Non-transferable
- Subject to confiscation for breach of Madison or Connecticut regulations
- Contain daily catch and size limit information, these limits strictly enforced
- Can be purchased at Madison Town Hall: Captain Morgan's bait and tackle shop
- Only Madison resident with a valid license may bring one (1) guest who shares one (1) limit

### **Shell fishing hours**

- Shell fishing is permitted year-round between sunrise and sunset
- Respect rights of others when shell fishing early in the day

### **Closures**

- Individual recreational shellfish areas are subject to closure following periods of rainfall and for shellfish management
- If you plan to shellfish you are encouraged to call the Madison shellfish info line at (203) 245-5600, option 3, beforehand for info on open and closed areas
- Open and closed areas are posted at each recreational shellfish area

### **Harvest Methods**

- Shellfish may be collected by hand or rake
- Dredges are prohibited; shovels are prohibited for the collection of steamer (soft shell) clams
- Limit: ½ bushel = 5 gallon bucket filled 2" from the top, Measurement ring 1 1/2" inside diameter required.

### **Parking**

- A shellfish license does not entitle you to a parking space
- Some areas do not offer legal parking and may be accessible only by boat
- Illegally parked vehicles will be ticketed and may be towed

### **Public and Private Property**

- A shellfish license does not grant access across private property to recreational areas
- On the shoreline, private property extends to the high tide line

### **Enforcement**

- Enforcement is carried out by multiple agencies including Madison Police, Madison Shellfish Wardens and State DEP
- Penalties for breach of town and state regulations include confiscation of shellfish and license and may include fines

### **Limits**

<b>Species</b>	<b>Limit</b>	<b>Size</b>
• Blue Mussel	½ Bushel	2 Inches on long axis
• Steamer Clams	½ Bushel	2 Inches on long axis
• Razor Clams	½ Bushel	3 Inches on long axis
• *Round Clams	½ Bushel	1 ½ Inches on long axis

Round clams must not pass through a 1 ½" inside diameter ring

Call 245-5600 – option 3 daily for information on open areas