

Madison

- We are a coastal community.
- We have beaches and marinas.
- We have salt marshes and tidal inlets.
- We have parks with fantastic water views.
- Our residences and businesses rely exclusively on septic systems for wastewater disposal.

Madison WPCA

CGS Sections 7-245 through 7-273a

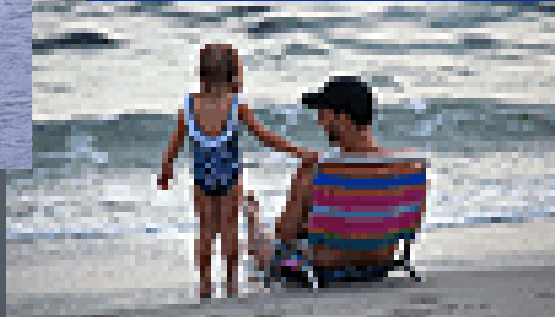
CGS Section 22a-416(b)

- Through their Water Pollution Control Authority (WPCA), municipalities are responsible for managing, or making arrangements to manage, the wastewater generated within their boundaries.
- Water pollution control plans (WPCP)
- Municipal wastewater facilities plan (MWFP)

The Sound, the shoreline and our local economy



- Our local economy depends on tourism and recreation.
- Our quality of life is closely tied to the environment.
- We must preserve and protect our shoreline resources.



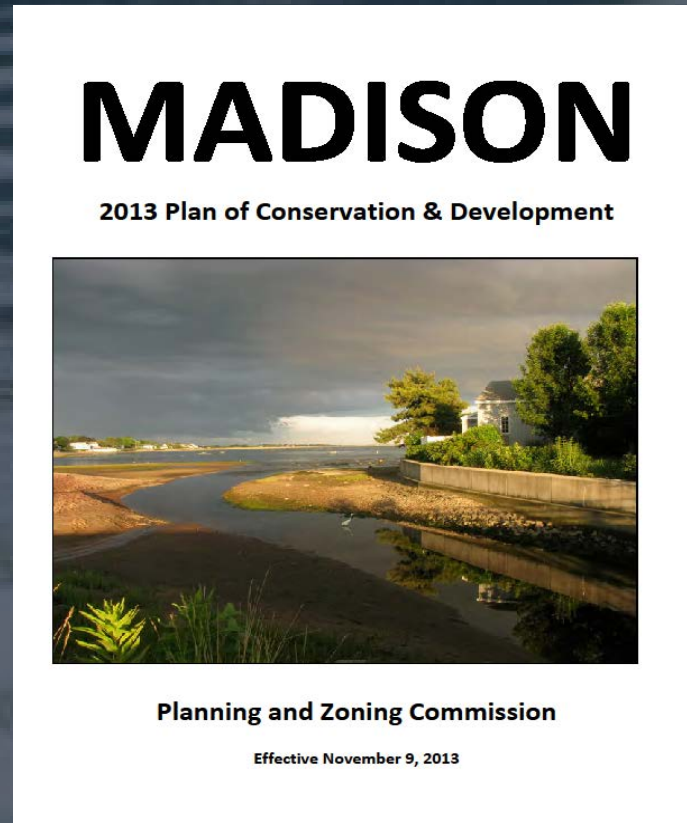
Septic systems have an impact on our marine resources.

- All wastewater treatment systems produce a discharge.
- Septic systems discharge treated wastewater to the groundwater.
- The better the system – the cleaner the discharge.
- Dirty discharges can degrade nearby marine or water resources.

Madison's Goals

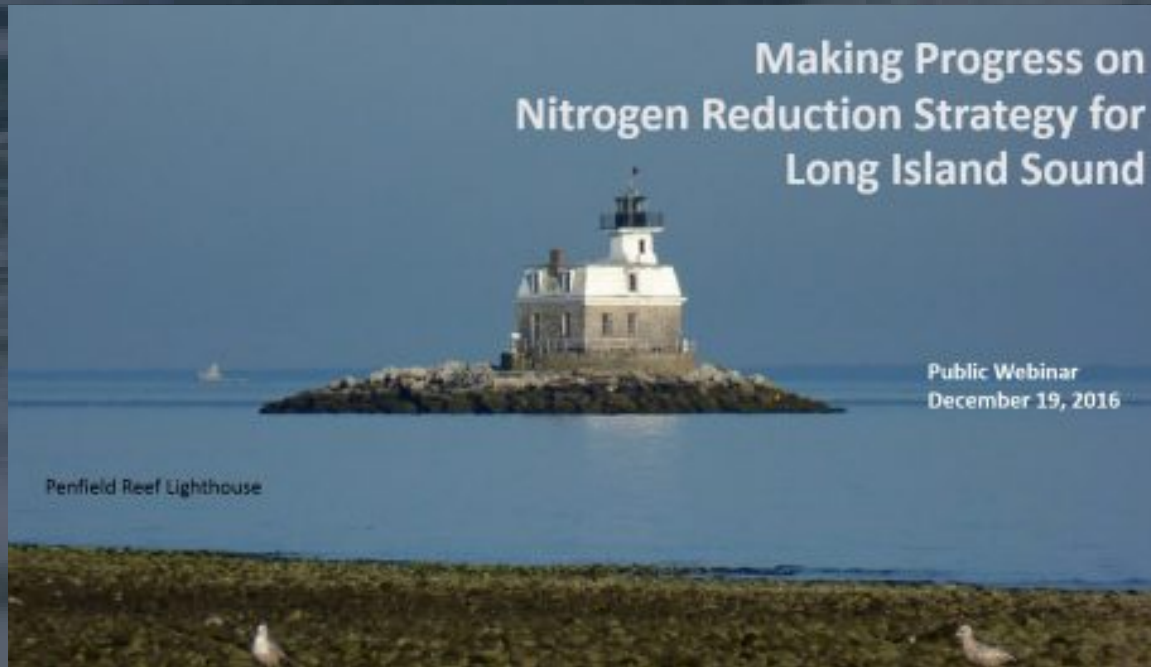
- We must act responsibly to preserve our environment.
- We must identify and correct any existing or potential pollution problems.
- We must plan for the future.

Long Term Planning



- Supports the objectives and recommendations of the Madison's POCD.

Long Term Planning



- Supports the objectives and recommendations of the Long Island Sound Study CCMP

Septic systems are great!

- Mother nature does all the work.
- Bacteria and microbes in the earth renovate the wastewater.
- Less expensive than building large treatment plants.
- They replenish the groundwater supply.
- They provide years of trouble free operation with little maintenance

Septic systems have limitations

- Too many systems in an area can overwhelm nature's ability to renovate.
- Some systems are old, and do not function well.
- Poor soil conditions or shallow groundwater table.
- Some systems are undersized for current use.
- Septic systems do not remove nitrogen.
- Some of our most densely developed areas are on the shoreline- close to our most precious resources.

WPCA Vision

- Continued reliance on septic systems for wastewater disposal.
- Achieve 100% compliant systems over time.
- Consider establishing Wastewater Management Districts for environmentally sensitive areas.
- Consider adopting enhanced septic system standards for new and repaired systems.
- Consider nitrogen removal technologies.

Nitrogen

- Nitrogen is a component of wastewater.
- Conventional septic systems cannot remove nitrogen.
- Nitrogen is a pollutant of concern resulting in:
 - Groundwater contamination
 - Algae blooms in LI sound
 - Hypoxia
 - Damage to salt marsh environments

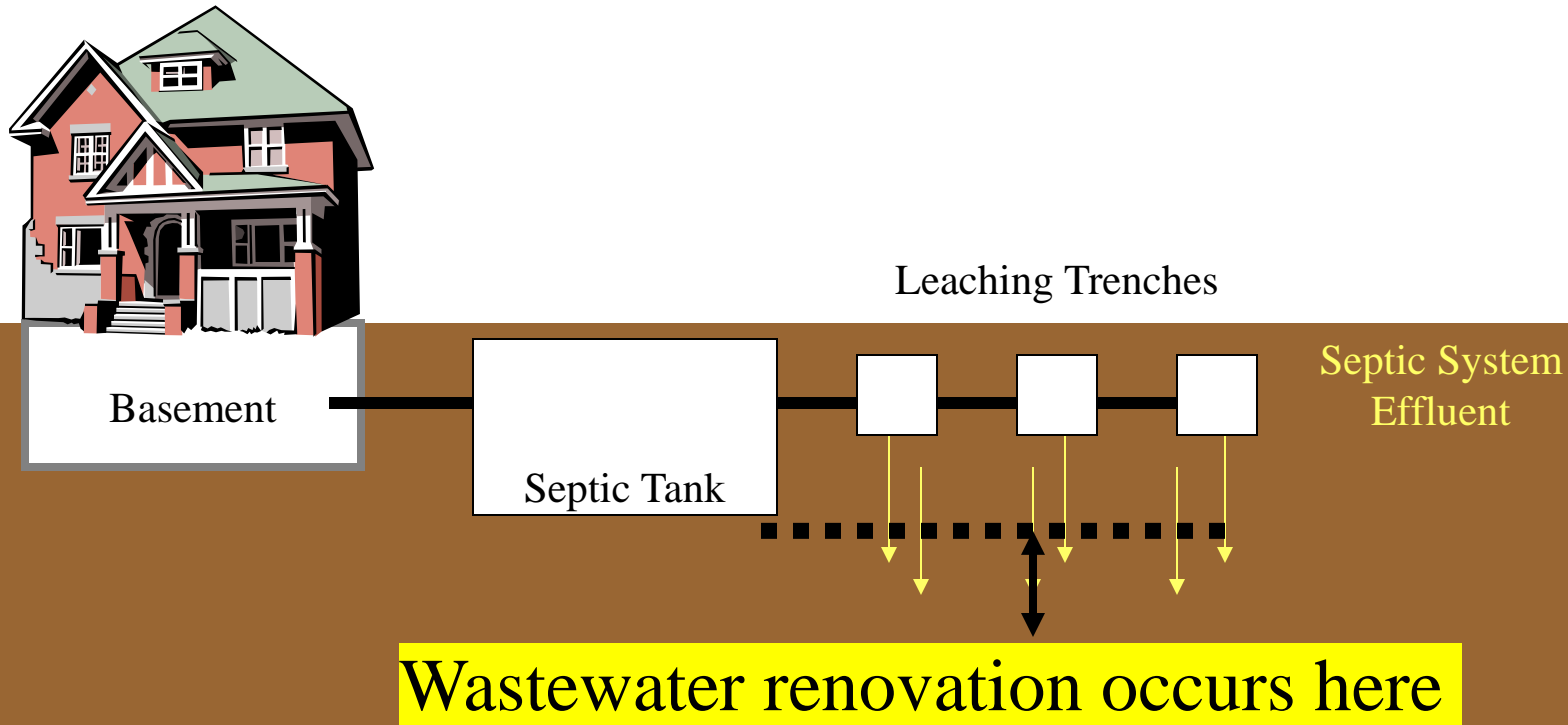
Recommendations

- Update the Town's facilities plan (last plan was 1986)
- Obtain DEEP funding for program components.
- Identify opportunities for improved on-site system performance.
- Establish wastewater management district guidelines.
- Create and adopt new codes and ordinances.

The Plan

- Local Control- the right plan for Madison
- Environmentally Sound.
- Cost-Effective.
- Think globally. Act locally.

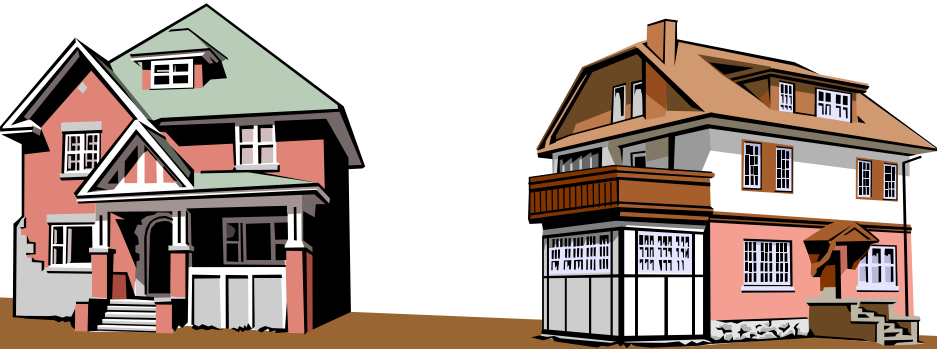
The Modern Septic System



Ground Water

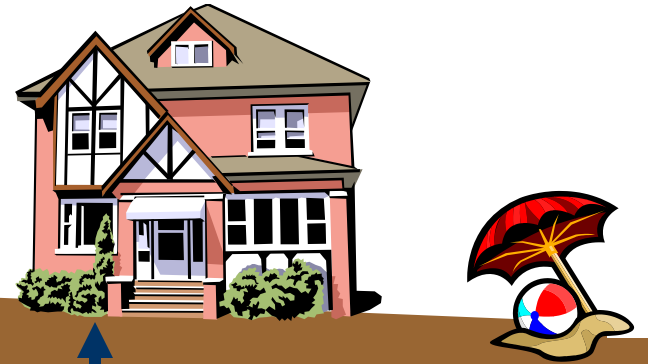
Depth to Groundwater

Northern Sections



10-15
feet

Waterfront Areas



6-48
inches